

# Enhancing Geoscientists Productivity with Studio

Victor A. Lunar

Services Manager Asia

Schlumberger Information Solutions

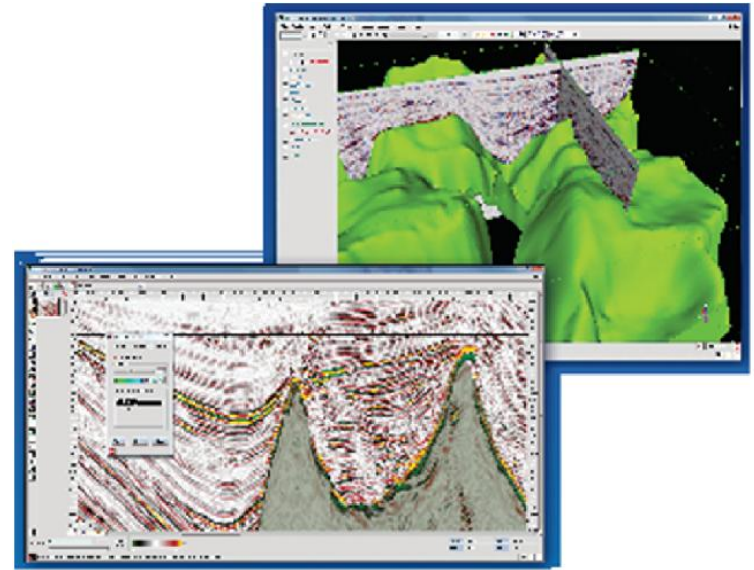
**Schlumberger**

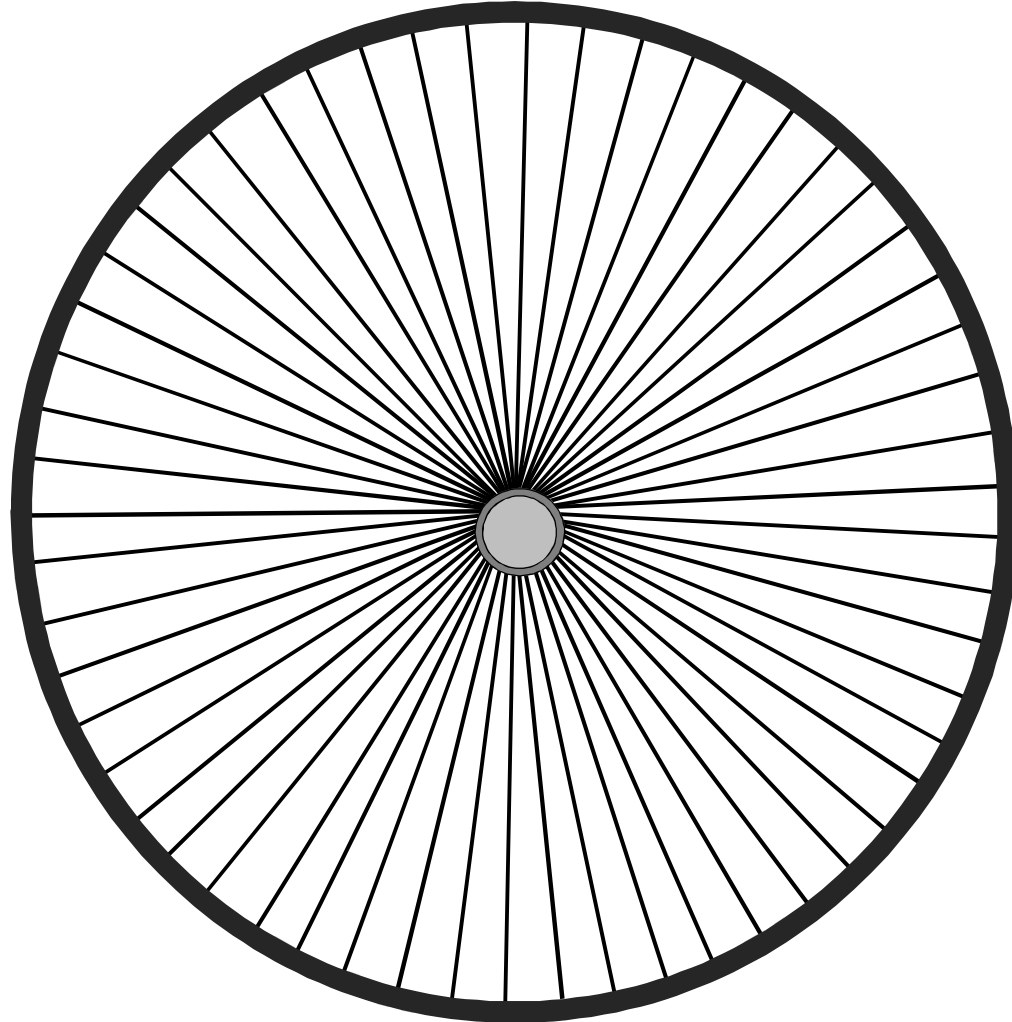
© 2013 Schlumberger. All rights reserved.

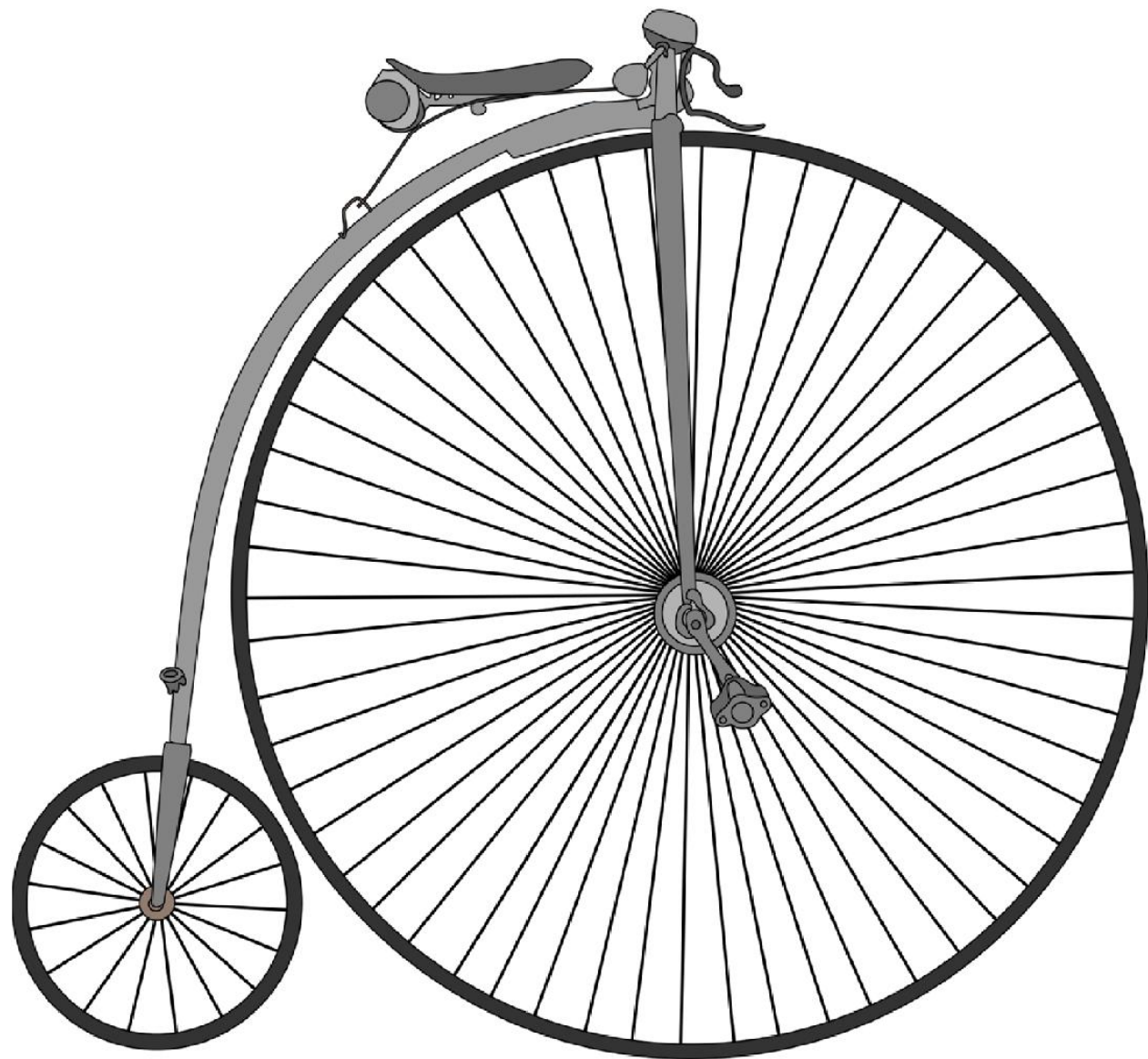
An asterisk is used throughout this presentation to denote a mark of Schlumberger. Other company, product, and service names are the properties of their respective owners.



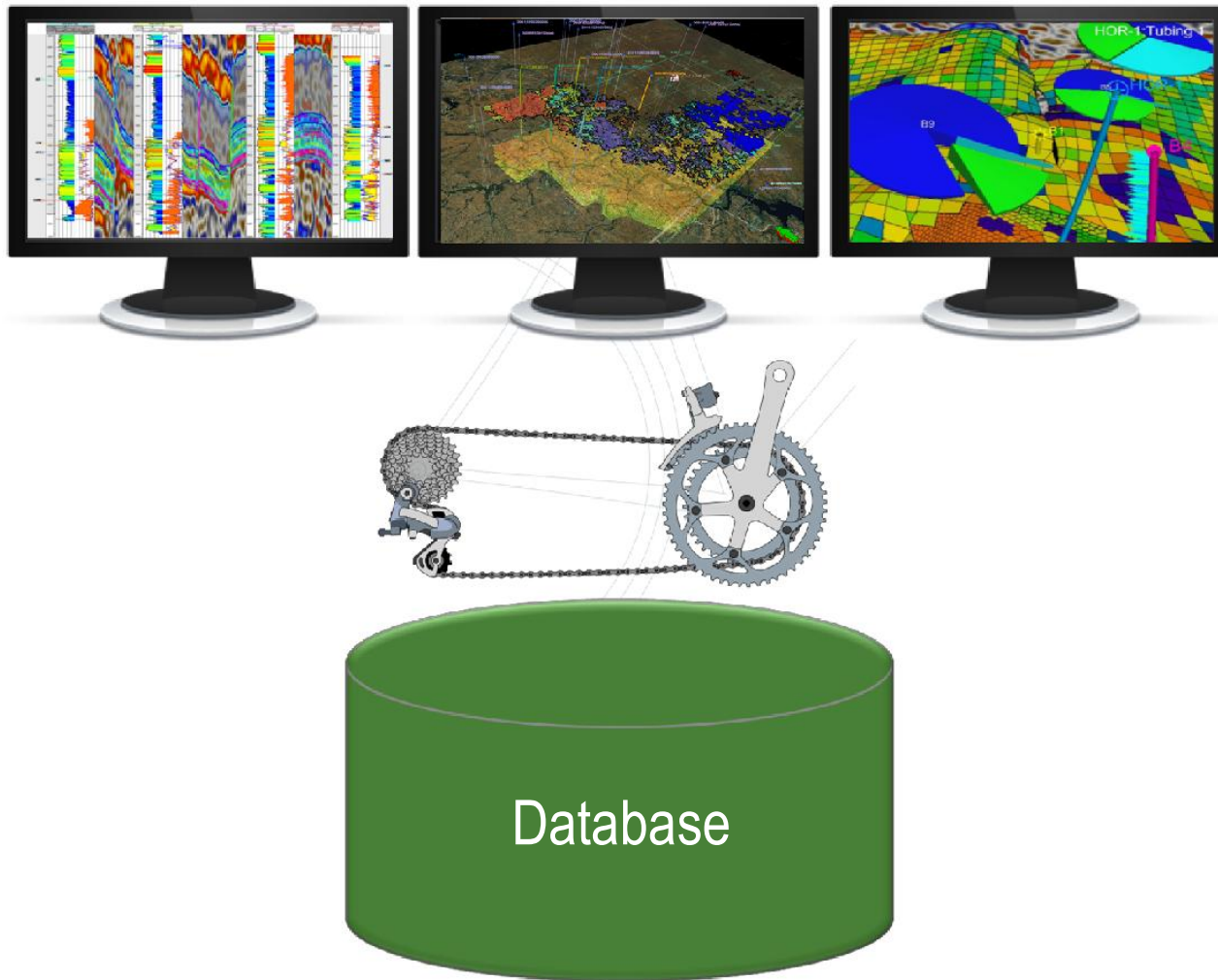
interp\_final  
interp\_final\_v1  
interp\_final\_v1\_final  
interp\_final\_v1\_final\_fb\_test  
interp\_final\_v1\_final\_fb\_final  
interp\_final\_v1\_final\_fb\_final\_mp\_scenarioA  
interp\_final\_v1\_final\_fb\_final\_mp\_scenarioA\_verified  
interp\_final\_v1\_final\_fb\_final\_mp\_scenarioA\_verified\_gold  
interp\_final\_v1\_final\_fb\_final\_mp\_scenarioA\_verified\_gold\_really\_final





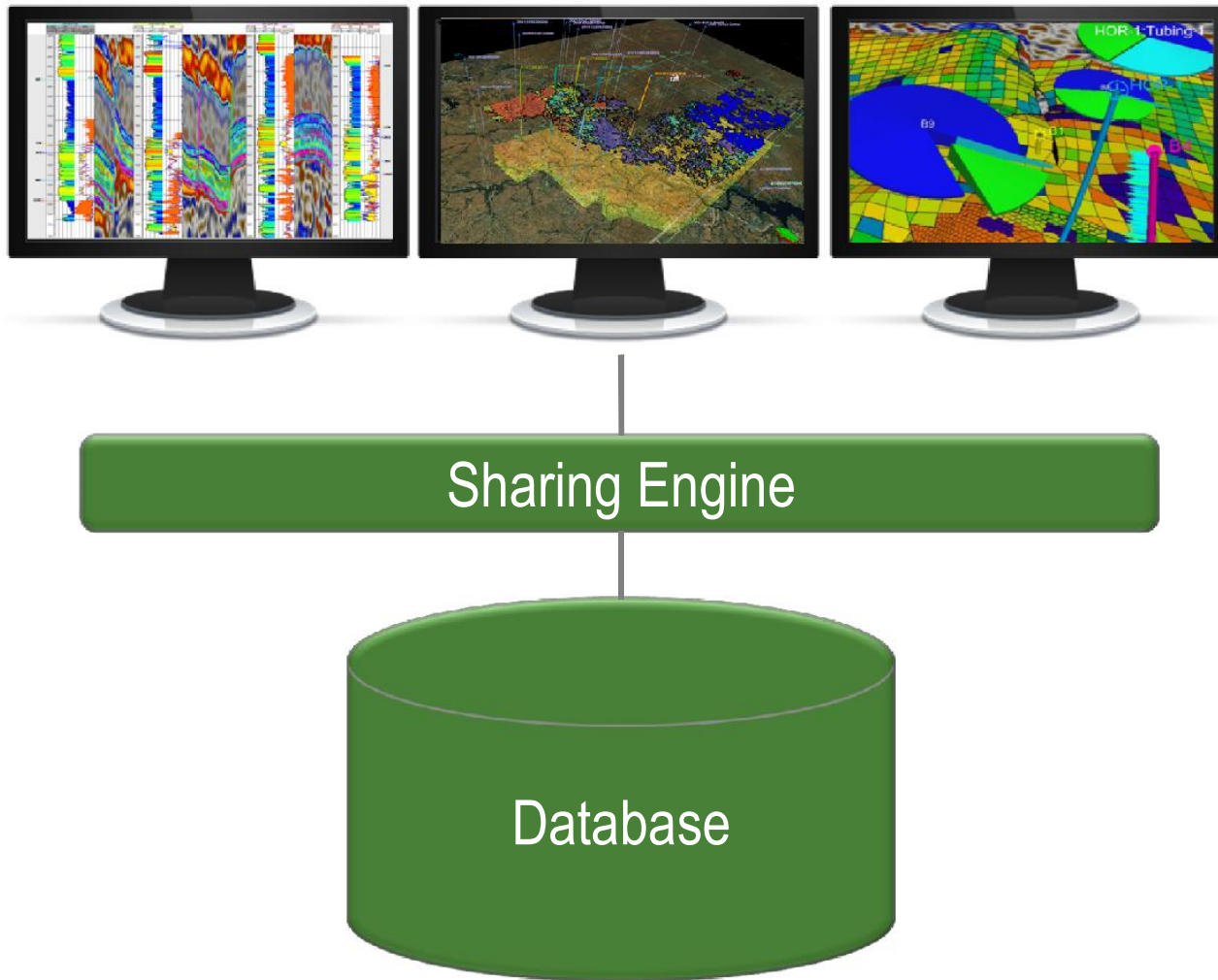


**Schlumberger**



**Schlumberger**

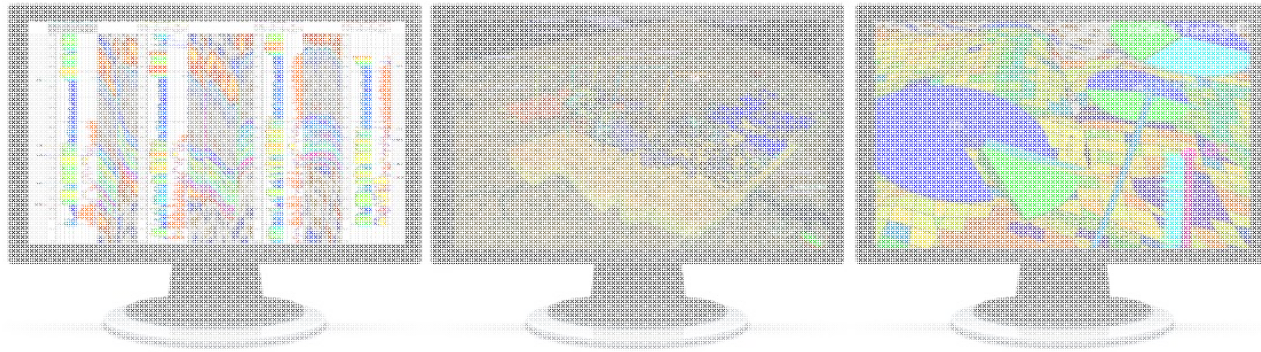








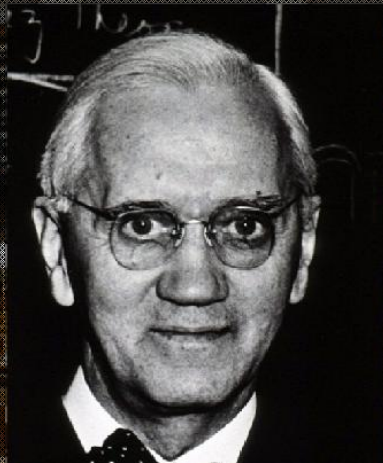
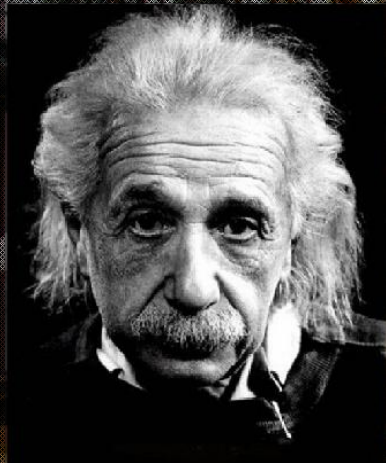




What else?

Database

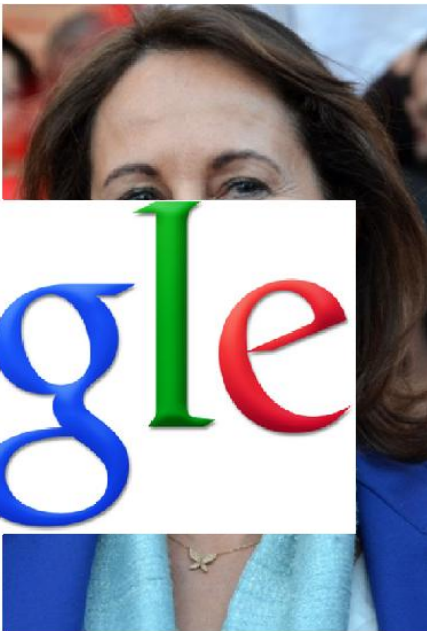








WIKIPEDIA  
The Free Encyclopedia

The Google logo, consisting of the word "Google" in its signature multi-colored font. Behind the logo, a portrait of Ségolène Royal, a French politician and presidential candidate, is visible. She has dark hair and is wearing a blue jacket with a gold necklace.

A biographical article in French Wikipedia portrayed Léon-Robert de L'Astran as an 18th century anti-slavery ship owner, which led [Ségolène Royal](#), a presidential candidate, to praise him. A student investigation later determined that the article was a hoax and de L'Astran had never existed.<sup>[16]</sup>

Source: Wikipedia

Schlumberger

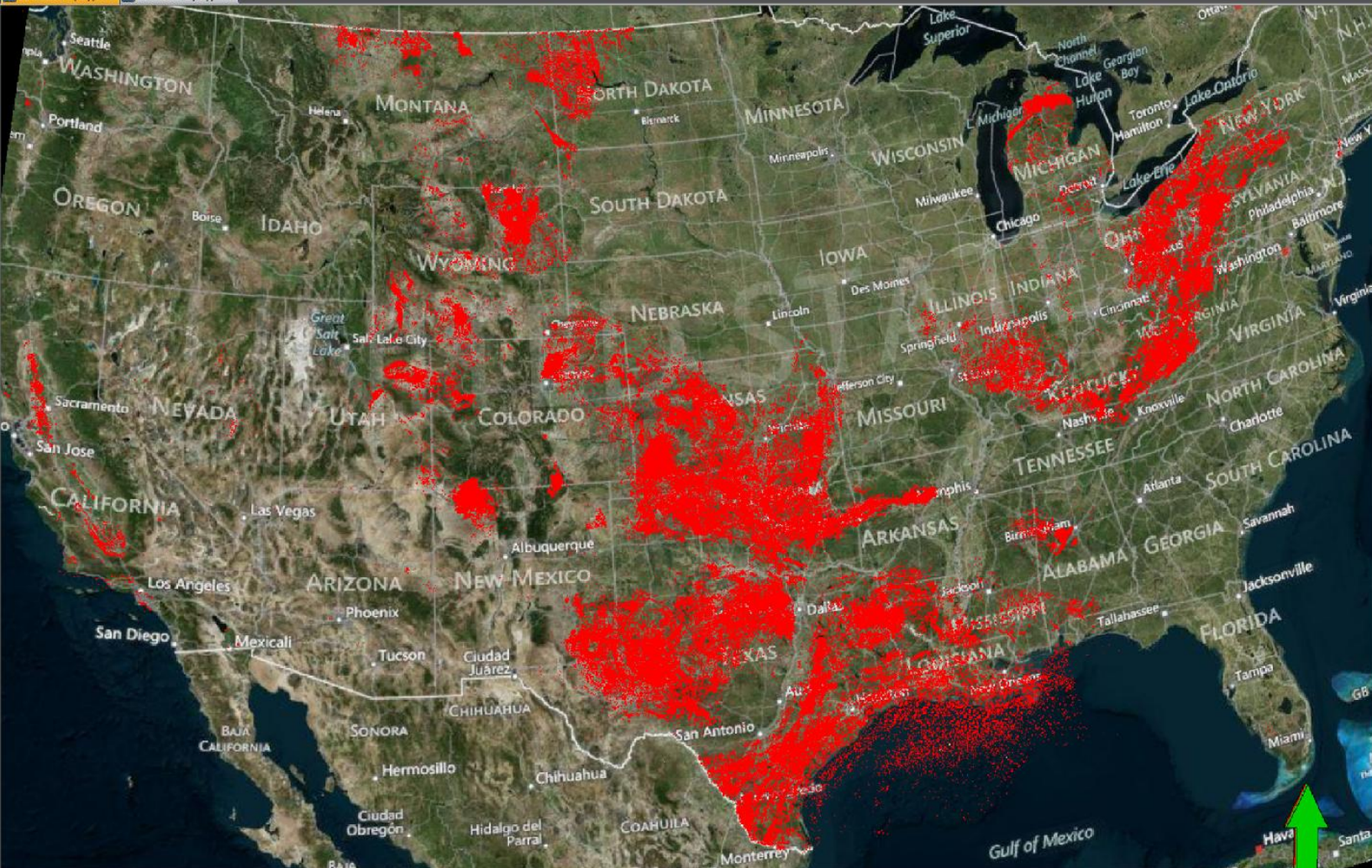


Index

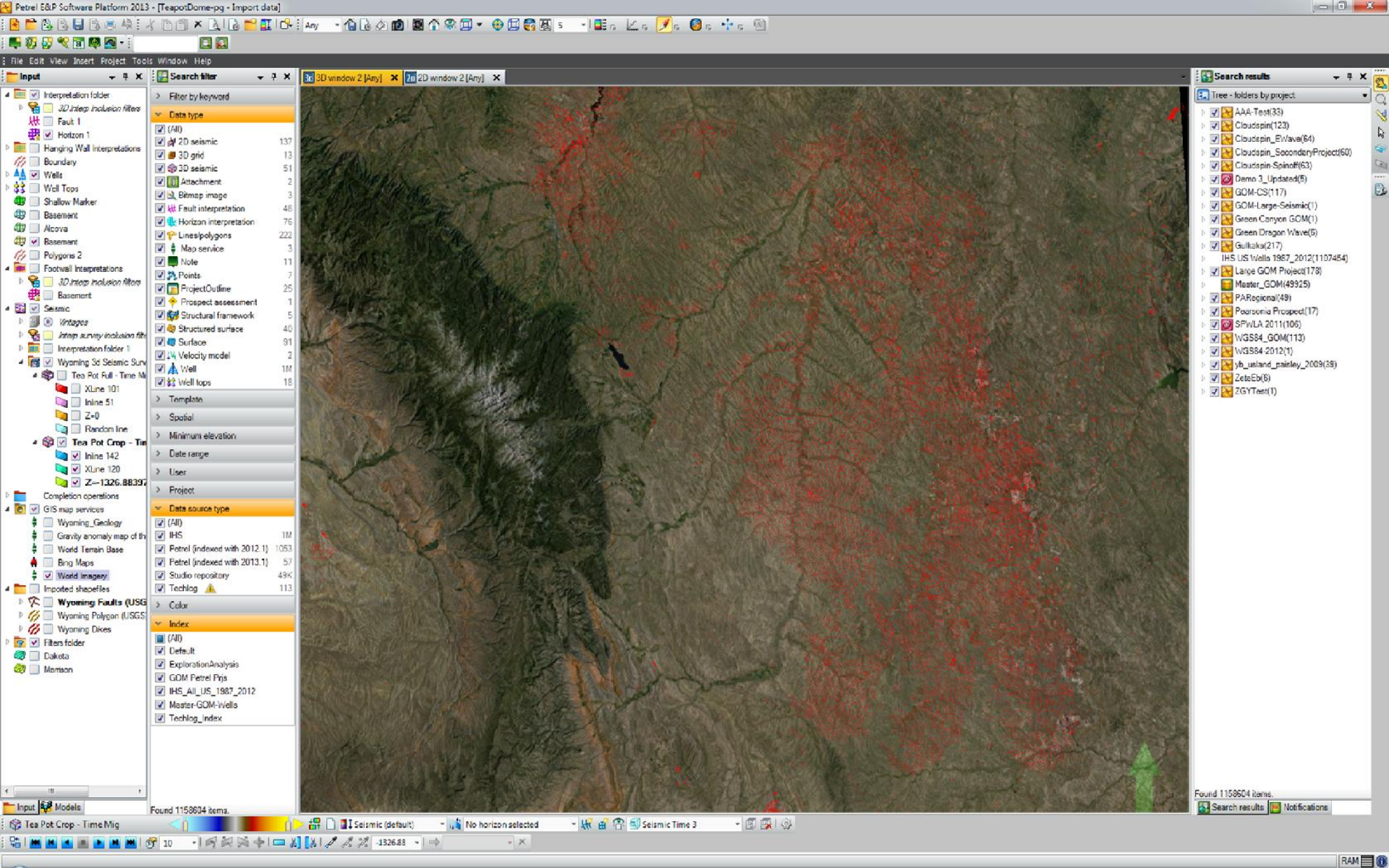
Database



- ☐ RMS amplitude
- ☐ TENSLEEP
- ☐ TVT
- ☐ X
- ☐ Y
- ☐ TENSLEEP
- ☐ TENSLEEP Top
- ☐ Demo\_fooly
- ☐ Boundary
- ☐ POINTS Avg intensity for lay
- ☐ Neural net 2009
- ☐ Edge around TENSLEEP T
- ☐ Fractures (Dip Classification)
- ☐ Fluids
- ☐ Image
- ☐ Teapot Field.jpg
- ☐ Teapot Lithology.jpg
- ☐ Google Earth\_Image2.jpg
- ☐ Cultural data (CLT)
- ☐ Geobody interpretation probes
- ☐ Tensleep\_structure
- ☐ TVT
- ☐ Horizon probe 3 [Opacity] 1
- ☐ Prec Model Inputs
- ☐ Rock physics functions
- ☐ Converted Faults (time)
- ☐ Log signature
- ☐ TENSLEEP
- ☐ Annotate
- ☐ Well tops 1
- ☐ Attributes
- ☐ Stratigraphy
- ☐ Faults
- ☐ Others
- ☐ Well filter
- ☐ Interpreter filter
- ☐ GIS map services
- ☐ World Imagery
- ☐ Wyoming\_Geology
- ☐ World Topographic Map
- ☐ Gravity anomaly map of the
- ☐ Spatial On Demand - 1km G
- ☐ Spatial on Demand - Magnet
- ☐ Spatial on Demand - US Top
- ☐ Spatial On Demand - 15m L
- ☐ Spatial On Demand - Bing M
- ☐ Spatial On Demand - 1km G
- ☐ Spatial On Demand - Bing M
- ☐ Snapshot bitmap images
- ☐ Imported shapefiles
- ☐ wgeol
- ☐ Polygons 1
- ☐ Polygons 2
- ☐ Polygons 3









File Edit View Insert Project Tools Window Help

Search filter

Filter by keyword

Data type

- (All)
- 2D seismic
- 3D grid
- 3D seismic
- Attachment
- Bitmap image
- Fault interpretation
- Horizon interpretation
- Lines/polygons
- Map service
- Map service snapshot
- Note
- Points
- Project Outline
- Structural framework
- Structured surface
- Surface
- Velocity model
- Well
- Well tops

Template

Spatial

Minimum elevation

Date range

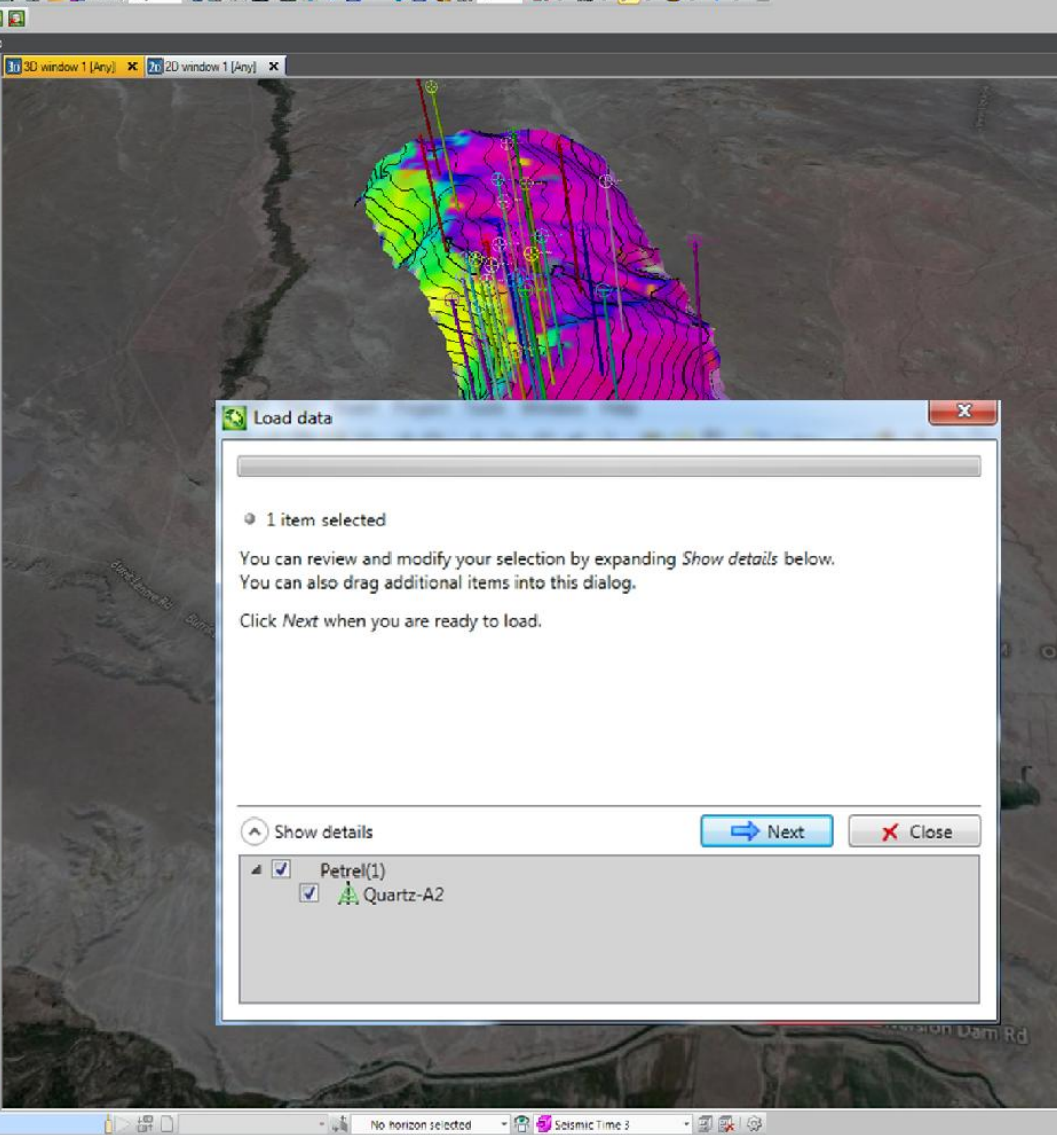
User

Project

Data source type

Color

Index



Load data

1 item selected

You can review and modify your selection by expanding *Show details* below.  
You can also drag additional items into this dialog.

Click *Next* when you are ready to load.

Show details

Next

Close

Petrel(1)

Quartz-A2

- Studio database
- Reference projects
- GeoFrame
- Techlog
- OpenSpirit
  - OpenWorks®
  - EPOS
  - ...
- IHS
- GeoFacets
- Avocet
- ProSource
- Open and extensible





Index

Database

- GeoFrame
- Techlog
- OpenSpirit
  - OpenWorks®
  - EPOS
  - ...
- IHS
- GeoFacets
- ProSource
- ...



## Database Users

Brian Laworini
Cameron Davis
Chase Jenkins
Christopher Cullen
Dean Quigley
Demetrios Nicholas Stellas
Gregory Nassar
Humberto Minas
Joe Varisco
John Powter
Jose Gonsalo
José Campos
Luigi Zotti
Matthias
Olivier Simondet
Sarah Wilson
Scott Stubbs
Todd Olsen
Trond Skjerven
Trygve Randen
Yasmine Samarani
Zuleik Maidin

## Message Center

Internal seismic transferred

Unable to transfer final Interpretation as data is marked as complete

Duplicate global well log recognized during transfer

## Find Filters

- > Data type
- > Spatial
- > Project
- > Measured depth (Well)
- > Operator (Well)
- > Horizon (Model)
- > Survey (Seismic)
- > Template
- > Checkshots (Well)
- > Logs (Well)
- > User
- > Index
- > Filter by keyword
- > Producing Zone (User defined)
- > Data source type

Find filters

## App Gallery

## Browse

## 3D



3D Viewer

## 2D



2D Viewer



Message Center

Provides viewing of 3D graphics for supported apps.

Provides viewing of 2D graphics for supported apps.

Browse program and repository transfer messages.

## Find

Browse your data indexed with Studio Find.

## Correct

View and correct repository data.

Correct reference data.

Correct user attributes.

## Manage

View application log entries.

Manage data environments and index schedules.

Manage index files for Studio Find.

Geodetic Catalog

Manage your geodetic catalog.

Coordinates

Manage coordinate systems and transformations.

Global Match Rules

Manage rules for matching data identifiers.

Quality

Manage quality tags for your data.

Repositories

Manage the repositories in your database.

Roles

Manage the roles assigned to users in your database.

Users

Manage users and role assignments for your database.

Filter Manager

Manage filters.

Reference Data Manager

Manage reference data.

App Gallery

## Data Table

## All items

## Show User Defined Properties

## Storage

## Well folder

## Well

## Well log

## Checkshot

## Point well data

## Well tops folder

## Well top

## Well observed data

## Page

## 1 of 2

## Items per page:

## 200

## Total: 268 (7 selected)

## UWI

## Name

## Path

## Reference level (m)

## MD at last point (m)

## TVDSS (m)

## 1

## 2

## 3

## 4

## 5

## 6

## 7

## 8

## 9

## 10

## 11

## 12

## 13

## 14

## 15

## 16

## 17

## 18

## 19

## 20

## 21

## 22

## 23

## 24

## 25

## 26

## 27

## 28

## 29

## 30

## 31

## 32

## 33

## 34

## 35

## 36

## 37

## 38

## 39

## 40

## 41

## 42

## 43

## 44

## 45

## 46

## 47

## 48

## 49

## 50

## 51

## 52

## 53

## 54

## 55

## 56

## 57

## 58

## 59

## 60

## 61

## 62

## 63

## 64

## 65

## 66

## 67

## 68

## 69

## 70

## 71

## 72

## 73

## 74

## 75

## 76

## 77

## 78

## 79

## 80

## 81

## 82

## 83

## 84

## 85

## 86

## 87

## 88

## 89

## 90

## 91

## 92

## 93

## 94

## 95

## 96

## 97

## 98

## 99

## 100

## 101

## 102

## 103

## 104

## 105

## 106

## 107

## 108

## 109

## 110

## 111

## 112

## 113

## 114

## 115

## 116

## 117

## 118

## 119

## 120

## 121

## 122

## 123

## 124

## 125

## 126

## 127

## 128

## 129

## 130

## 131

## 132

## 133

## 134

## 135

## 136

## 137

## 138

## 139

## 140

## 141

## 142

## 143

## 144

## 145

## 146

## 147

## 148

## 149

## 150

## 151

## 152

## 153

## 154

## 155

## 156

## 157

## 158

## 159

## 160

## 161

## 162

## 163

## 164

## 165

## 166

## 167

## 168

## 169

## 170

## 171

## 172

## 173

## 174

## 175

## 176

## 177

## 178

## 179

## 180

## 181

## 182

## 183

## 184

## 185

## 186

## 187

## 188

## 189

## 190

## 191

## 192

## 193

## 194

## 195

## 196

## 197

## 198

## 199

## 200

## 201

## 202

## 203

## 204

## 205

## 206

## 207

## 208

## 209

## 210

## 211

## 212

## 213

## 214

## 215

## 216

## 217

## 218

## 219

## 220

## 221

## 222

## 223

## 224

## 225

## 226

## 227

## 228

## 229

## 230

## 231

## 232

## 233

## 234

## 235

## 236

## 237

## 238

## 239

## 240

## 241

## 242

## 243

## 244

## 245

## 246

## 247

## 248

## 249

## 250

## 251

## 252

## 253

## 254

## 255

## 256

- **Find** data in context of the model, disparate sources
- Share and **collaborate**
- **Manage** in context of the asset

