



PETRONAS

PETRONAS E&P Technical Data Contractor Compliance Index (CCI) –

Towards Data Submission Excellence

By:

Sharifah Dalila Syed Idrus (Dell)

Technical Data,

Petroleum Management Unit, PETRONAS

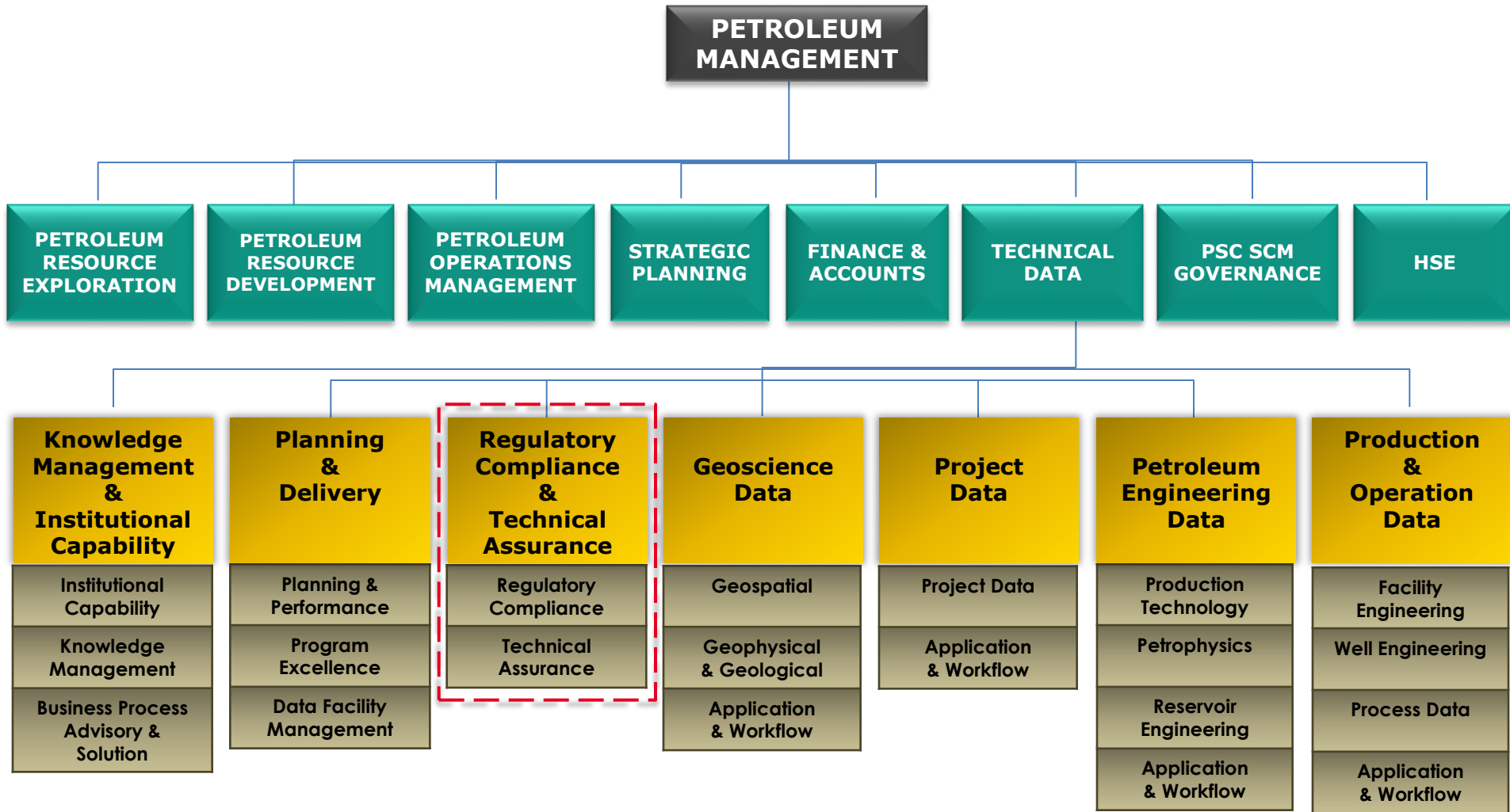
© 2013 PETROLIAM NASIONAL BERHAD (PETRONAS)

All rights reserved. No part of this document may be reproduced, stored in a retrieval system or transmitted in any form or by any means (electronic, mechanical, photocopying, recording or otherwise) without the permission of the copyright owner.

Presentation Outline

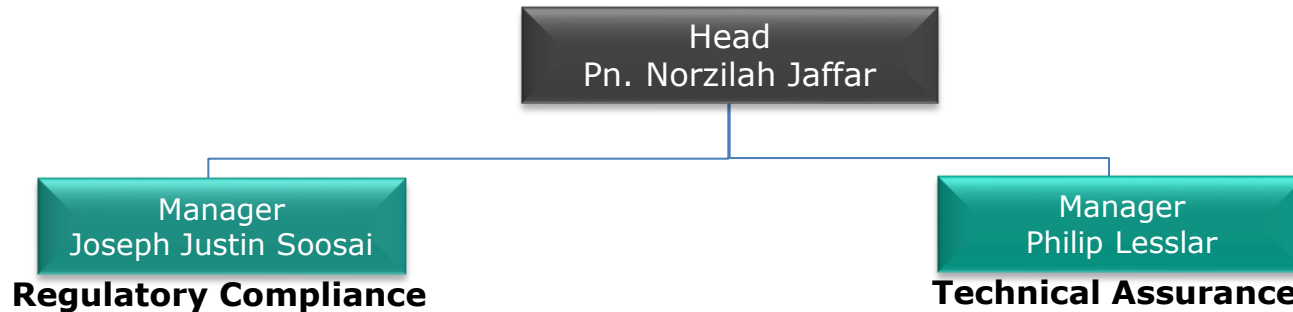
- Background
- Data Submission Requirement
- Contractor Compliance Index (CCI)
 - Objective
 - Components
 - Indicator
 - Scoring sample
- CCI Performance for Data
- Conclusion

Technical Data was formed to elevate functional excellence and delivery discipline of data management



Regulatory Compliance & Technical Assurance (RCTA)

Technical Data, PMU is the **custodian** of all generated **petro-technical data** identified for **archival** purposes, ensuring final data are **safeguarded** and **preserved** for a long term usage and according to **standards**



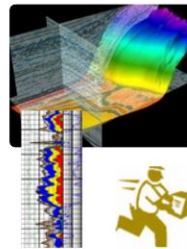
Track and enforce data capture & recovery

Review submission progress against activities conducted by the PSCs



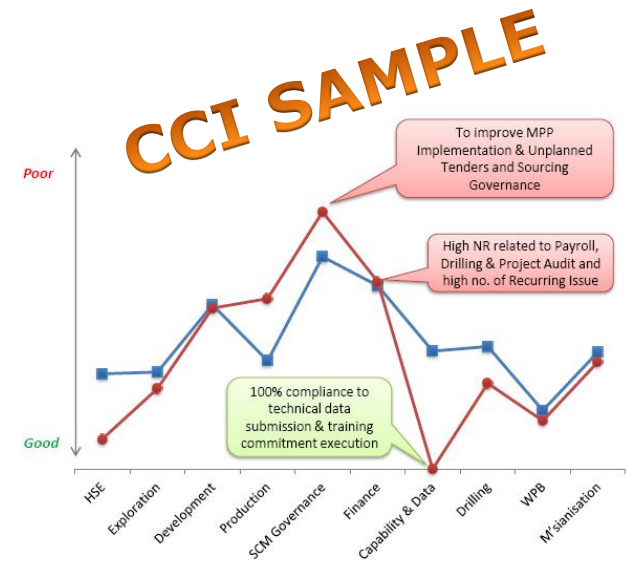
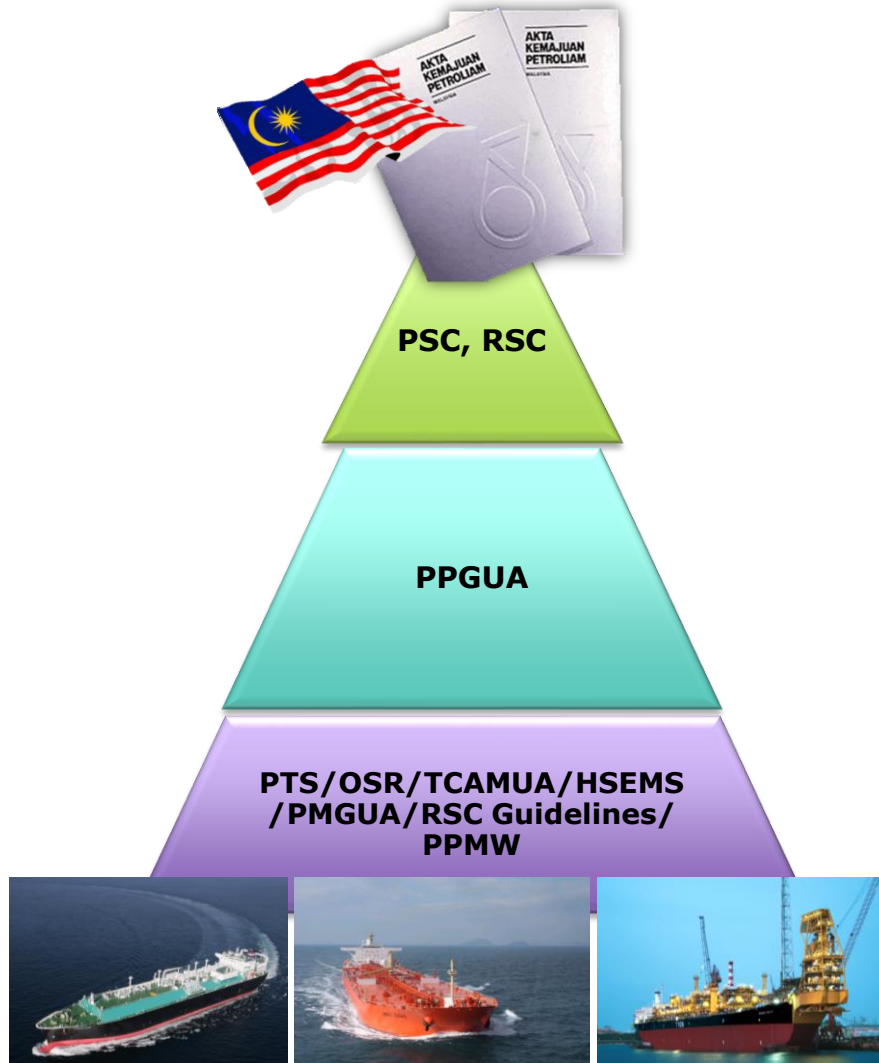
Manage data requests, data reviews & data packaging

Facilitate data requests, data review, and data packaging for internal and external users for block promotions and various G&G studies



In 1974 PETRONAS was given the mandate to manage the Msian oil and gas resources through the Petroleum Development Act. This is carried out through Petroleum Management Unit that plays the role of regulator in managing the Contractors

Petroleum Development Act (PDA) 1974



"Data" according to PETRONAS Procedures and Guidelines for Upstream Activities (PPGUA)...

Data

PPGUA

Volume 10 Section 5

- In accordance with the terms and conditions of the Petroleum Arrangement (PA), PETRONAS has **the entire ownership** of all original data and information generated from upstream petroleum activities under the applicable PA.
- A copy of the original data:
 - Technical data, information and samples** relevant to Geological & Geophysical (G&G), surface and subsurface engineering data i.e. seismic, drilling, well, core sample, platform diagram, conceptual design, technical reports, etc.
 - Physical samples** such as drill cuttings, drill cores, a representative portion of sidewall cores, fluid (oil, gas, condensate, water) & any other types of samples.
- Shall be submitted to PETRONAS to be **preserved** for future use in the domestic E&P ventures.

Contractor Compliance Index (CCI)

What

A holistic measure to evaluate Petroleum Arrangement (PA) Contractors compliance level objectively

Why

It serves as an indicator for PETRONAS to recognize the contractor through incentive or impose Consequence Management if necessary

How

CCI rating will be based on the audit findings, compliance to PSC and PETRONAS standards & guidelines, and performances. The final score will be classified as Good, Fair, Unsatisfactory and Poor

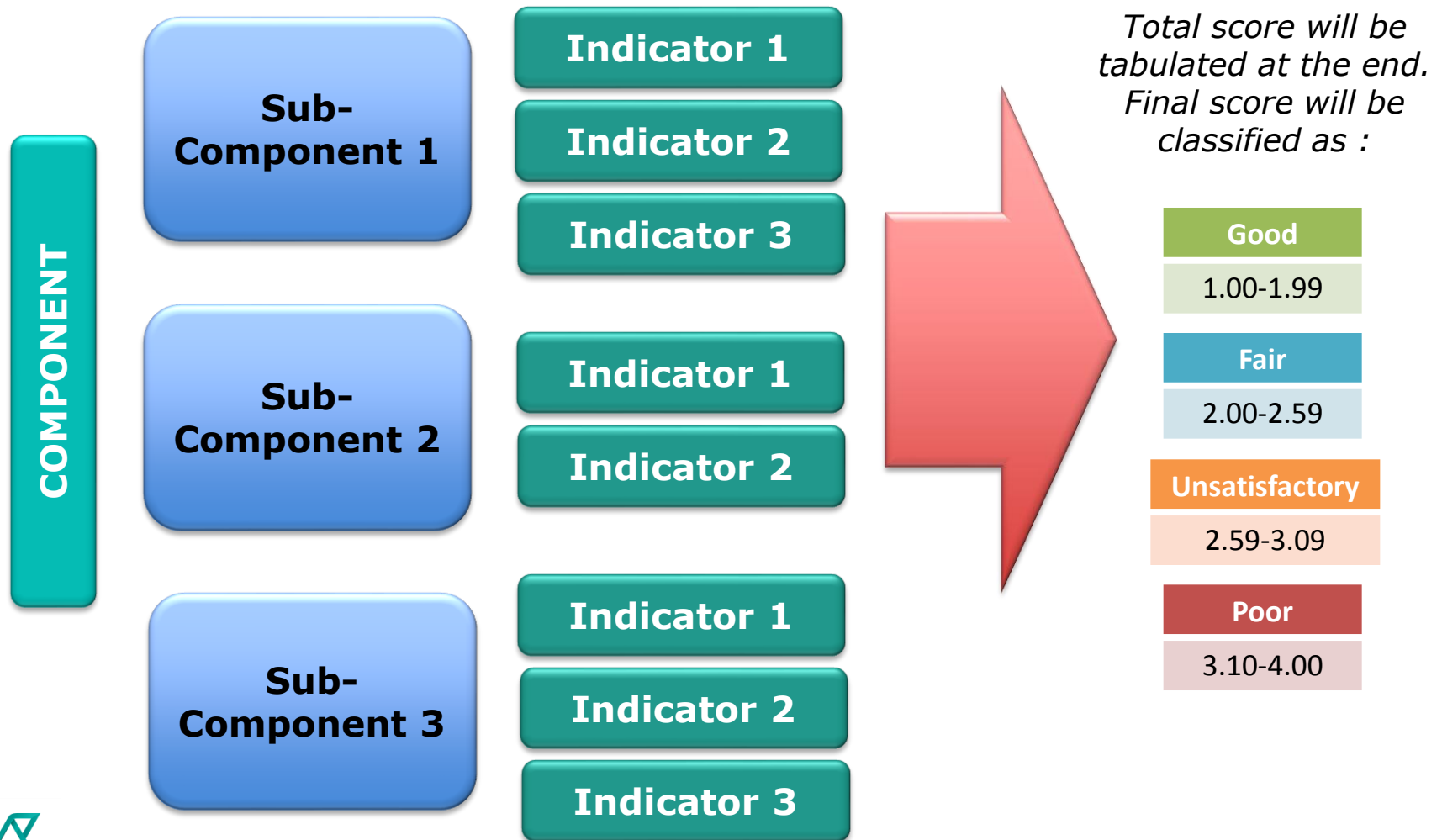
COMPONENTS

- HSE
- Exploration
- Development
- Production
- SCM Governance
- Finance
- **Data & Capability**
- Drilling
- Work Programme & Budget
- Malaysianisation

WHY?

- Promote healthy competition
- Track PSCs' performance
- Identify issues and challenges
- Collaborate and share best practices

Each component may have 1 or more sub-components and indicator where the Contractors will be assessed and evaluated



CCI Indicator for Data

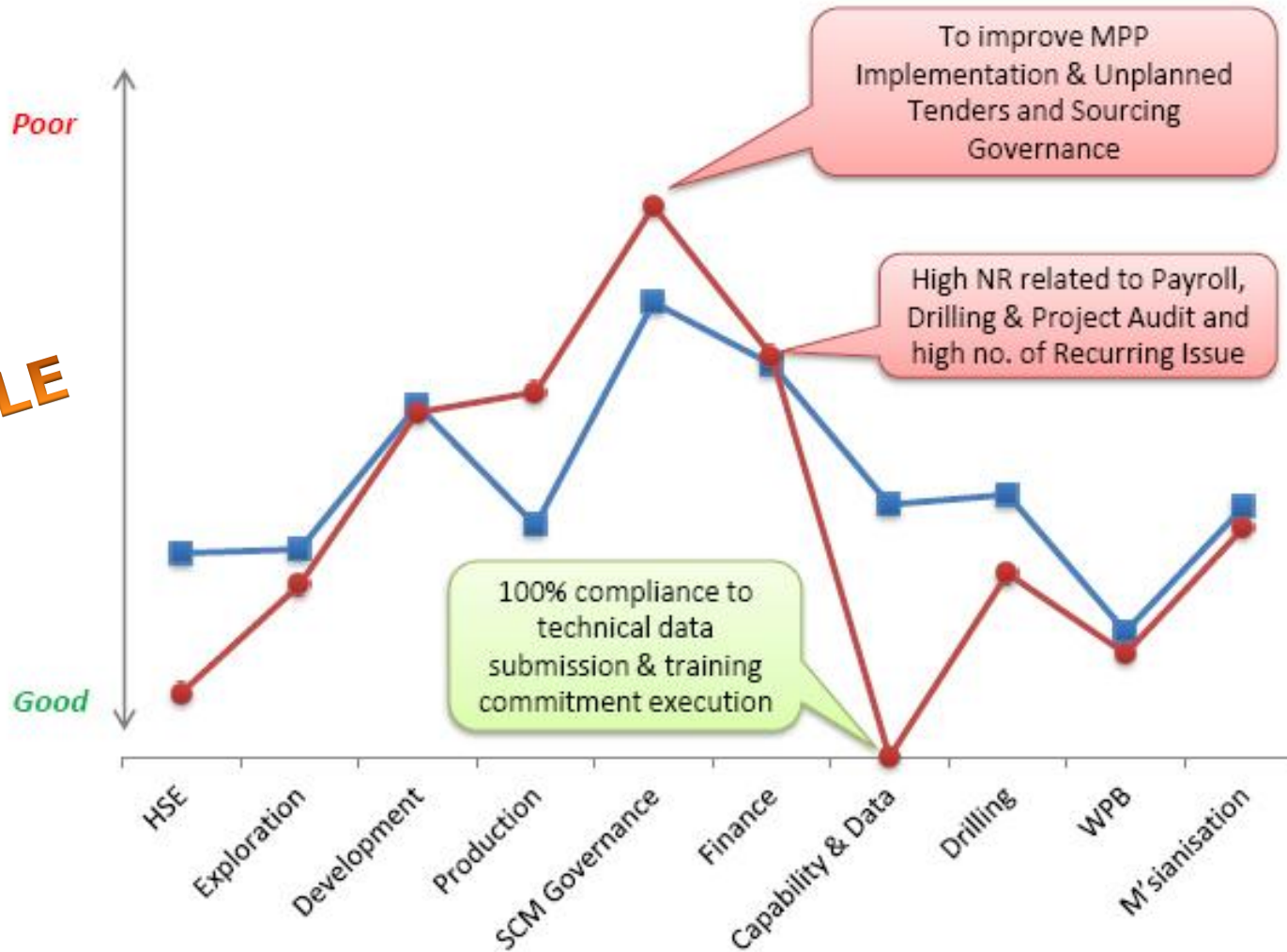
Sub-Component	Indicator	Good	Fair	Unsatisfactory	Poor
Data	Annual Technical Data Submission for past year (e.g. activities in 2012 to be submitted by end of 2013) (100%)	100% submission as per completed activities + latest completed activities	100% submission as per completed activities	< 100% submission as per completed activities	< 80% submission as per completed activities

The ruler is based on following criteria;

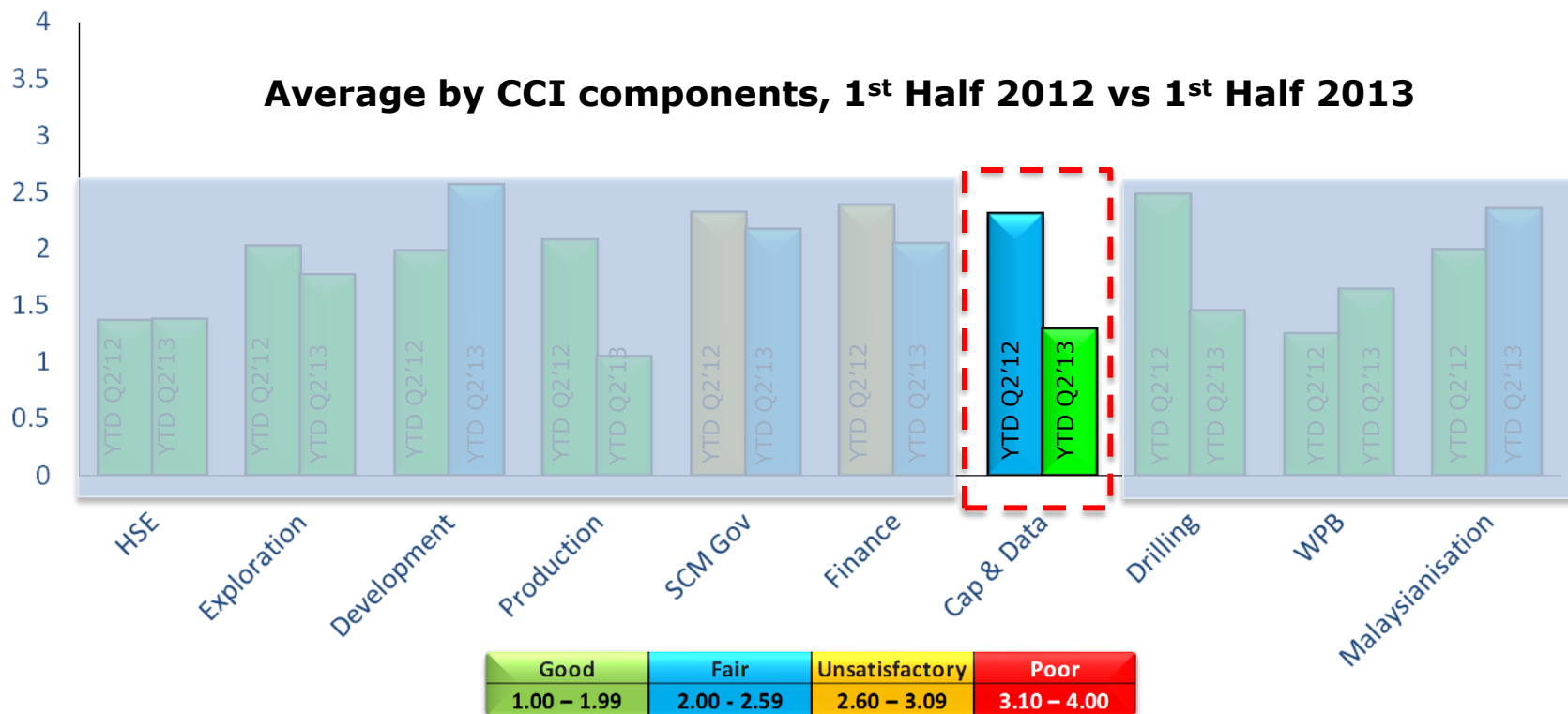
Criteria	Details
Timeliness	Submission of primary data types on agreed timeline as per PPGUA
Quality	Compliance to standards and formats of all data types
Quantity	Data dimension and volume
Effort	<ul style="list-style-type: none"> • Frequent engagement • Written justification • Prompt follow ups

CCI Scoring Sample

SAMPLE



In overall, most of the contractors have made improvement on Capability & Data component scoring in CCI 1st Half 2013.



In Conclusion

- More proactive response from the PSC on data submission
- Improvement in overall performance in data submission percentage
- More collaboration among PSCs in resolving issues and challenges



PETRONAS

THANK YOU